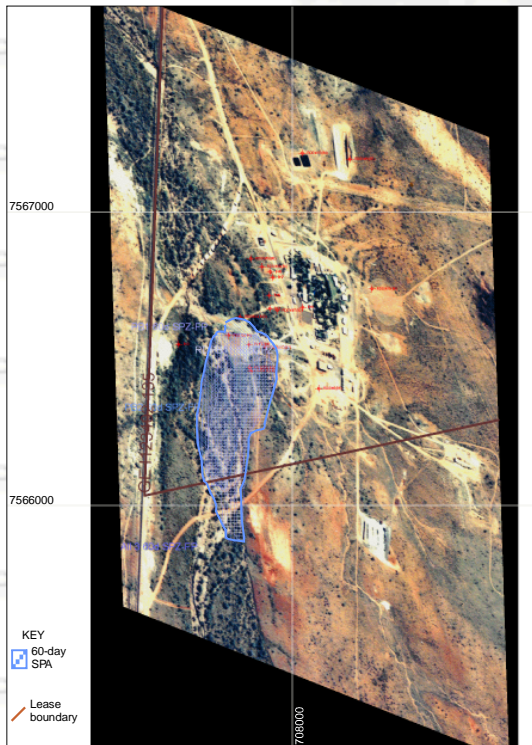




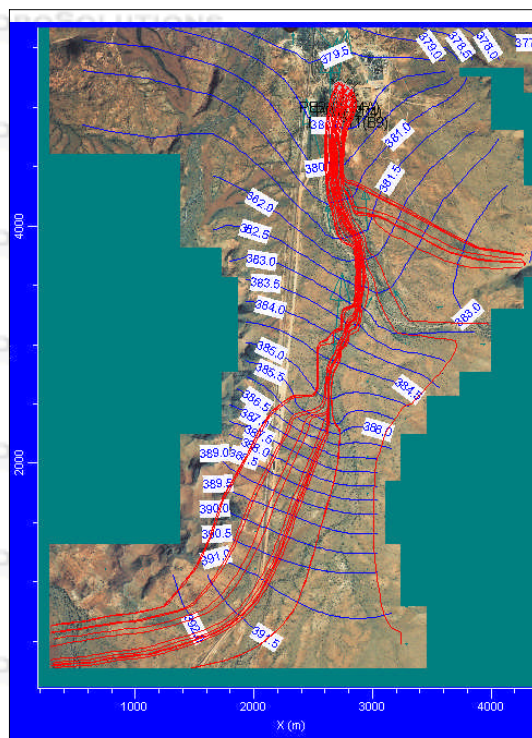
PROJECTS
HYDROGEOLOGY



HYDROSOLUTIONS PTY LTD
CLIENT: BHP Billiton Iron Ore Pty Ltd
PROJECT: BHPB167: Redmont Source Protection Plan
FIGURE: 9: Flowpath 60-day Source Protection Areas

SCALE: 1:10,000 at A4
DRAWN: SRJ
DATE: May 2006
FILE: BHPB167-11666-F9

Aerial photograph courtesy of DLI



HYDROSOLUTIONS PTY LTD
CLIENT: BHP Billiton Iron Ore Pty Ltd
PROJECT: BHPB167: Redmont Source Protection Plan
FIGURE: 13: Estimated extent of Total Catchment Zone

SCALE: 1:25,000 at A4
DRAWN: SRJ
DATE: May 2006
FILE: BHPB167-11666-F13

Aerial photograph courtesy of DLI

Hydro21

BHP BILLITON IRON ORE PTY
Redmont Railcamp Potable Water
Source Protection Plan

A source protection plan was developed for the potable water abstraction bores supplying Redmont railcamp, consistent with Dept of Water and Water Corporation guidelines.

Raw water is obtained from two bores completed within a weathered pegmatite associated with the current course of the Coonarie Creek.

A numerical groundwater model was constructed using FLOWPATH covering the groundwater and surface water catchments supplying the aquifer.

- Time of travel zones were defined including:
- 60day Source Protection Area (SPA) to provide a sanitary protection zone
 - 365day SPA, equivalent to a wellhead protection area priority 2 area
 - Total catchment area.

Incompatible landuses were identified and an initial risk assessment to the raw water source was undertaken. Recommendations were made to undertake a review of the water treatment and distribution system consistent with the Australian Drinking Water Guidelines 2004.

Hydrosolutions Pty Ltd
U14, 14 Whyalla Street
Willetton
Western Australia 6155
Tel: (+61 8) 9457 5448
Fax: (+61 8) 9457 4293
Mob: 0403 021533

E-mail: stuart.jeffries@hydrosolutions.com.au
Website: www.hydrosolutions.com.au