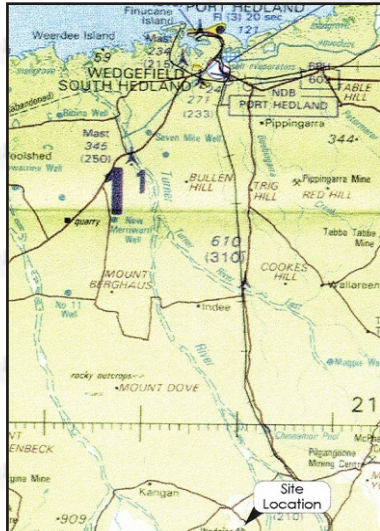


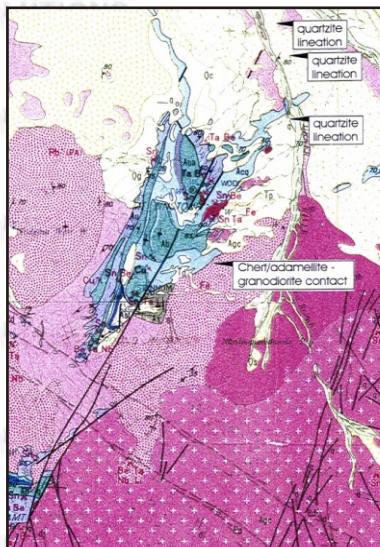


PROJECTS HYDROGEOLOGY

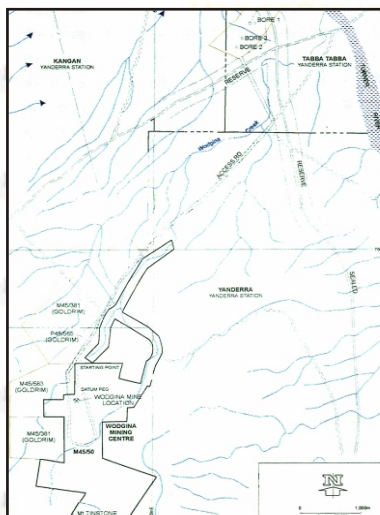
Hydro 5



Part map courtesy of DoLA



Part geological map courtesy of GSWA



Part map courtesy of GSWA

GWALIA CONSOLIDATED

Identification & development of additional groundwater resources, Wodgina Mine, WA

Gwalia Consolidated were seeking additional process water resources to meet an increased in production capacity at their Wodgina Tantalite Mine, 120km south of Port Hedland. A desk appraisal identified potential groundwater yielding structures/targets, which were ranked according to prospectivity and distance from the mine.

An exploration licence was obtained and a field exploration program undertaken, in consultation between the consultant, Gwalia and the Mugarinya Aboriginal Corporation.

Four target structures were investigated through the construction of pilot holes.

Production bores were established at two locations, and a test-pumping program undertaken. One location provided a sustainable resource of adequate quantity and quality.

An assessment of interference effects was undertaken to optimally locate a further two production bores.

Recommendations were made to equip and operate the borefield to maximise the available sustainable resource.

A production licence was obtained for the borefield.

Hydrosolutions Pty Ltd
U14, 14 Whyalla Street
Willetton
Western Australia 6155
Tel: (+61 8) 9457 5448
Fax: (+61 8) 9457 4293
Mob: 0403 021533

E-mail: stuart.jeffries@hydrosolutions.com.au
Website: www.hydrosolutions.com.au