



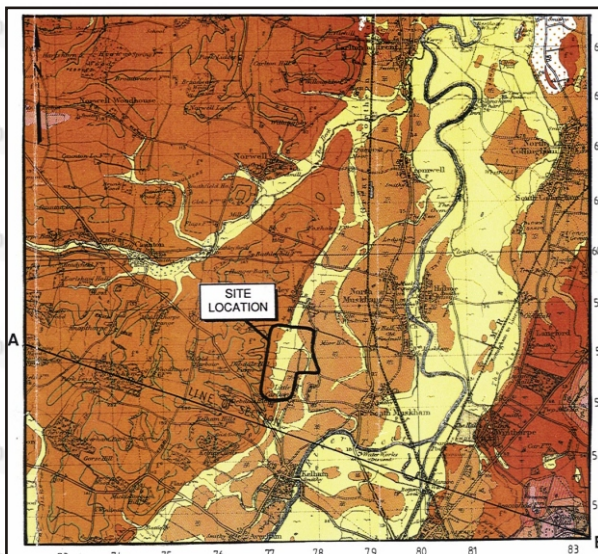
## PROJECTS

## HYDROGEOLOGY

Hydro 10

### RMC/EVERED QUARRY PRODUCTS

Assessment of aggregate resources, development and restoration options

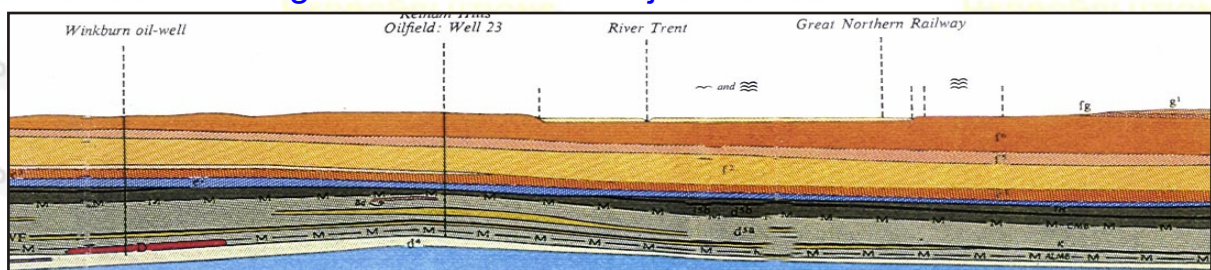


Part geological map courtesy of BGS.

A quarry products company is developing a sand & gravel body as a source of roadstone. The deposit would be worked dry using dewatering. An assessment was made of the impact from dewatering on the regional water table. Numerical modeling indicated that there were no constraints on site development provided that dewatering occurred on a phased basis.

Groundwater quality was variable, and recommendations were made for the control of discharge water quality through the use of recirculation lagoons.

A geotechnical appraisal was made of the potential for consolidation during dewatering on surrounding land. Recommendations were made for safe batter angles to be retained adjacent to built structures.



Geological cross section courtesy of BGS.

HydroSolutions Pty Ltd  
U14, 14 Whyalla Street  
Willetton  
Western Australia 6155  
Tel: (+61 8) 9457 5448  
Fax: (+61 8) 9457 4293  
Mob: 0403 021533

E-mail: [stuart.jeffries@hydrosolutions.com.au](mailto:stuart.jeffries@hydrosolutions.com.au)  
Website: [www.hydrosolutions.com.au](http://www.hydrosolutions.com.au)