



PROJECTS

CONTAMINATED LAND & GROUNDWATER

Contam14

PHASED GROUNDWATER INVESTIGATION

Groundwater Contaminant Plume Off-site Migration Investigation
Bulk Chemical Storage and Manufacturing Facility, Kwinana, WA

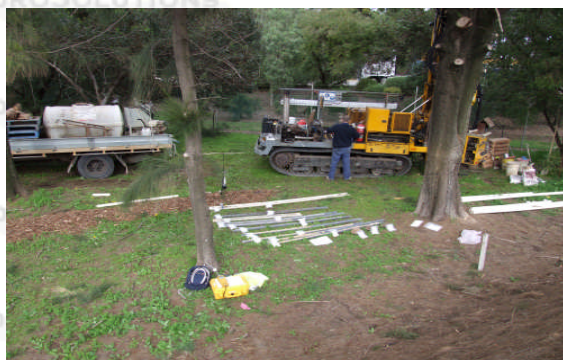
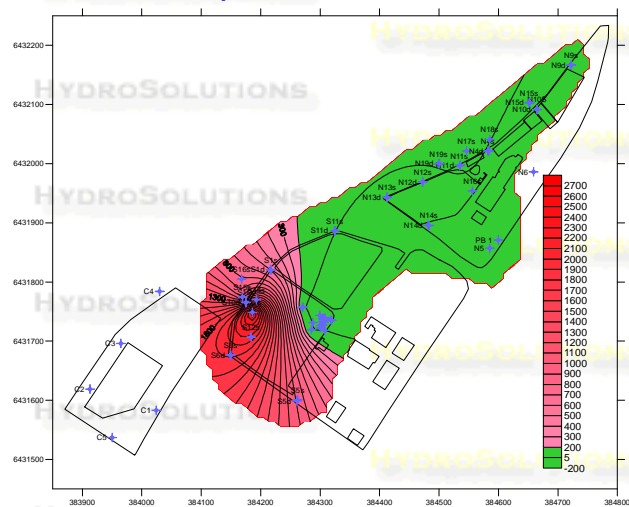


A phased groundwater investigation is underway at a bulk chemical storage and manufacturing facility. The site stores diesel, petrol, caustic and acids, and manufactures a variety of agrochemicals at three adjacent sites.

An initial study reviewed the history of chemical storage, manufacturing and the existing monitoring record. The new phase of work was subsequently undertaken to investigate off-site groundwater impacts and delineation of contamination within the main plume area.

The new phase of work established a total of eighteen additional bores as nested and single piezometers on the downgradient boundary and off-site locations, to monitor groundwater at depth throughout the saturated profile.

Results gave clear indications of the off-site migration of contaminants. The site is confirmed to be a 'source site' as defined under the *Contaminated Sites Act 2003*.



HydroSolutions Pty Ltd
U14, 14 Whyalla Street
Willetton
Western Australia 6155
Tel: (+61 8) 9457 5448
Fax: (+61 8) 9457 4293
Mob: 0403 021533

E-mail: stuart.jeffries@hydrosolutions.com.au
Website: www.hydrosolutions.com.au

