

Surface Water Capabilities



HYDROSOLUTIONS
PTY LTD
Hydrogeological & Environmental Consultants

Western Australia's independent groundwater & environmental consultancy, with a proven track record in groundwater, surface water, environment, risk assessment, contaminated land management & auditing. We combine reliable expertise with regulatory knowledge, delivering high-quality output on time & on budget.



HYDROLOGY

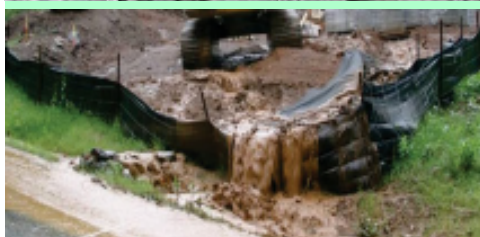
We complement our groundwater capability with surface water expertise, covering the full water cycle. We have undertaken surface water studies for mining, urban development & agricultural projects, including with BHP Billiton, City of Stirling and Perth Airport. Our capabilities include:

- ◆ Annual average max/min groundwater levels (AAMGL)
- ◆ Climate change/ stochastic modelling
- ◆ Cropwater/irrigation requirements
- ◆ Nutrient & Irrigation Management Plans (NIMPs)
- ◆ Drainage
- ◆ Catchment studies
- ◆ Monitoring design & implementation
- ◆ Mine site water management
- ◆ Pit water long-term quality
- ◆ Rainfall run-off/ evaporation/ infiltration/ recharge
- ◆ Run-off/soil & landform studies
- ◆ Salinity studies/ salinisation management
- ◆ Structural/ non-structural stormwater design
- ◆ Surface water/ groundwater interaction/ baseflow separation/hydrograph analysis
- ◆ Water banking/ managed aquifer recharge
- ◆ Water balance studies

URBAN WATER MANAGEMENT

We provide practical solutions for surface water management for land development projects, through in-house hydraulic civil engineering. Our services include:

- ◆ Local Water Management Strategies (LWMS)
- ◆ Urban Water Management Plans (UWMP)
- ◆ Planning approvals & design objectives
- ◆ Subdivision surface water management/ dewatering modelling/ erosion control
- ◆ Stormwater modelling & management
- ◆ Drainage models integrated with GIS data
- ◆ Water use efficiency, water balances
- ◆ Annual average mean groundwater level (AAMGL)
- ◆ Drainage, irrigation & waste water design
- ◆ Sustainable Urban Drainage systems (SUDs)



ACID SULFATE SOILS

We have in-house practical, numerical, analytical modelling and GIS capabilities. We undertake hydraulic & solute transport modelling, including:

- ◆ ARD
- ◆ Dewatering management systems
- ◆ Acid Sulphate Soils sampling & analysis
- ◆ ASS management plans
- ◆ Soil & water treatment options
- ◆ Department of Environmental Regulation ASS risk maps
- ◆ Treatment options/ management
- ◆ Acid/base accounting



Hydrosolutions Pty Ltd

Contact **Stuart Jeffries**

E: stuart.jeffries@hydrosolutions.com.au

T: 08 9457 5448

F: 08 9457 4293

M: 0403 021533

Subscribe to our newsletter at www.hydrosolutions.com.au

Skype: **Hydrosolutionspl**

FB: **HydroSolutions**